

Order Form

for "LUCHS IV" as well as "LUCHS V" register measuring elements – Digital Printing

(Valid as of April 2024)

There are different measuring element types which can be ordered as a set with three different set variations or ordered individually.

Please fill out one order form for each measuring element type!

1. Digital printing system resolution:

(Please check)

- 600 dpi 720 dpi 750 dpi
 1200 dpi 1440 dpi 1500 dpi

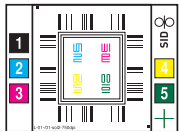
2. Required file format:

(Please check)

- pdf tiff

3. Required measuring element type:

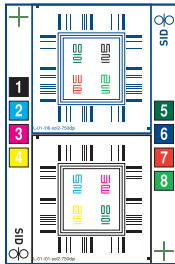
(Please check)



Digital printing element LUCHS

(max. 5 printing units)

- per element
 100 €



Digital printing element LUCHS

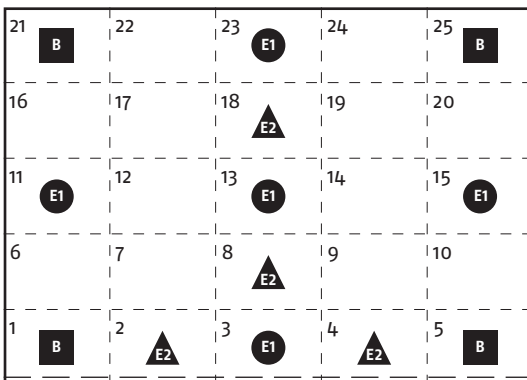
twofold
(max. 8 printing units)

- per element
 100 €

4. Required set variation for the measurement positions and required number of single elements:

(Please check)

Illustration of measurement positions on the sheet:



Set variation:

- Basic set **B**
(consists of one measuring element for the positions 1, 5, 21, 25 i.e. four measurement positions)
- Extension set 1 **E1**
(consists of one measuring element for the positions 3, 11, 13, 15, 23 i.e. five measurement positions)
- Extension set 2 **E2**
(consists of one measuring element for the positions 2, 4, 8, 18 i.e. four measurement positions)
- Single elements
 Position: _____

5. Prices (plus VAT):

The price per order form results from the required measuring element type price from point 3 multiplied by the number of measurement positions according to the set variation and the number of single elements. **The price is valid for a maximum of 2 different resolutions.**

Customer (Name of company, contact person)	
Telephone:	
E-mail:	
Required date of delivery:	Order number:
Date:	Signature: