

# Order Form

## for "LUCHS IV" as well as "LUCHS V" register measuring elements – Offset Printing

(Valid as of April 2024)

There are different measuring element types which can be ordered as a set with three different set variations or ordered individually.

All measuring elements in the versions "Standard" or "Doubling-free" can be ordered simultaneously. The register measuring system must be equipped with the option "Doubling-free" version.

All measuring elements will always be delivered in platesetter resolutions of 2400 dpi and 2540 dpi.

**Please fill out one order form for each measuring element type!**

### 1. Required version:

(Please check)

- Standard
- Doubling-free  
(structured lines)

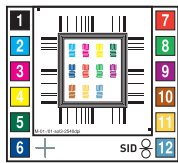
### 2. Required file format:

(Please check)

- PDF
- TIFF

### 3. Required measuring element type:

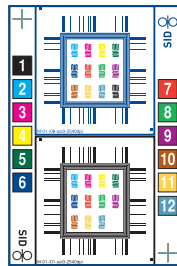
(Please check)



#### Basic element LUCHS

(max. 12 printing units)

- per element  
100 €



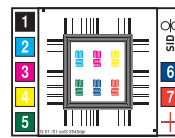
#### Combination element LUCHS

(max. 12 printing units)

- per element  
100 €

Reference printing unit for perfecting

- PU6  PU8  PU10  PU12



#### Precision element LUCHS

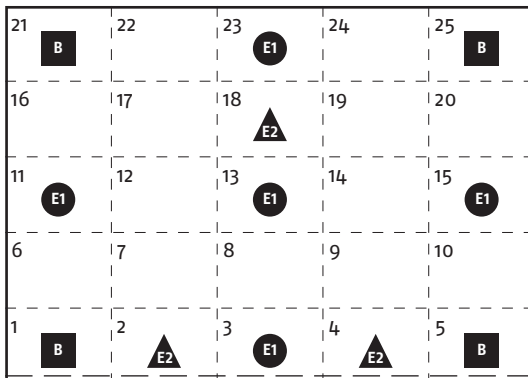
(max. 7 printing units)

- per element  
100 €

### 4. Required set variation for the measurement positions and required number of single elements:

(Please check)

Illustration of measurement positions on the sheet:



Set variation:

- Basic set **B**  
(consists of one measuring element for the positions 1, 5, 21, 25 i.e. four measurement positions)
- Extension set 1 **E1**  
(consists of one measuring element for the positions 3, 11, 13, 15, 23 i.e. five measurement positions)
- Extension set 2 **E2**  
(consists of one measuring element for the positions 2, 4, 8, 18 i.e. four measurement positions)
- Single elements  
Position: \_\_\_\_\_

### 5. Prices (plus VAT):

The price per order form results from the required measuring element type price from point 3 multiplied by the number of measurement positions according to the set variation and the number of single elements. The price will be doubled when choosing both the "Standard" and "Doubling-free" variations.

<b>Customer</b> (Name of company, contact person)	
Telephone:	
E-mail:	
Required date of delivery:	Order number:
Date:	Signature: